



# megaspin 1300P

**THE FASTEST** FULLY  
AUTOMATIC BALANCER  
ON THE MARKET

**6,4"**

**MEASURING CYCLE**

**3D  
LASER  
SCAN**

**AUTO  
SENSE**

**LASER  
POINT  
ACCURACY  
NO CHECKSPIN**

**SIDE  
LASER**

**AVS  
SONAR**

**HUBMATCH**

**OWB  
ONE WEIGHT  
BALANCING**



**MEGA  
CLAMP**

**AUTOMATIC  
POSITIONING**



6,4''

MEASURING CYCLE

### In a single measurement cycle:

- Automatic acquisition of wheel dimensions and correction planes
- Unbalance measurement
- Rim runout measurement
- Tyre runout measurement
- Direct Matching - Hubmatch®
- One Weight Balancing

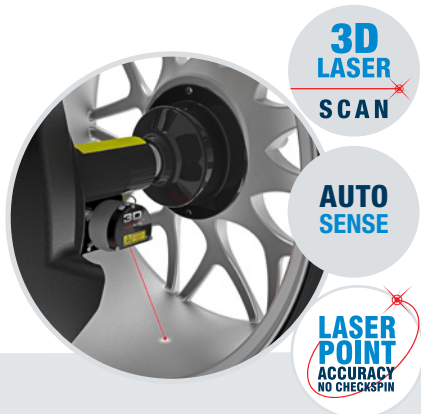
megaspin



Touch screen with extremely user-friendly interface

megaspin 1300P





## Automatic data input

The 3D Laser Scan, combined with the Auto Sense, measures with high precision the dimensions of any rim profile, without any intervention of the operator.

During the correction phase, the 3D Laser Scan pinpoints the exact position for stick-on weights application inside the rim. Any possible error during the weight positioning is avoided thanks, also, to the electric brake, which locks the wheel into the exact correction position. A led light illuminates the working space inside the rim.



## Anti Vibration System

Since the vibrations of a wheel often not depend only on the imbalance, M1300P makes a more in-depth analysis of the run-out thanks to the Anti Vibration System (AVS). The AVS Sonar, during the normal balancing cycle, detects wheel eccentricity with a 0,1 mm accuracy, providing an accurate result in just a few seconds. Simultaneously, Hubmatch detects the wheel's maximum eccentricity point and provides the operator with simple guided steps to reduce it by using only hub bore clearance and gravity.



## Side laser

Two laser beams indicate the exact 12 o'clock position to place clip-on weights. With these accurate reference points, any possibility of error during the positioning of counterweights is eliminated.



## One Weight Balancing

One Weight Balancing is automatically activated, at the end of the spin, and suggests a single ideal correction plane instead of two. The laser pointer indicates the exact point where it is possible to balance the wheel minimizing both static and dynamic imbalance, using only one counterweight.

OWB offers 30% time savings for 70% of wheels.



## Megaclamp - Pneumatic locking

Pneumatic locking ensures perfect wheel centering on the spindle, reducing clamping time.



## Automatic positioning

Automatic positioning system, supported by the electromagnetic brake added on the DC motor, allows the wheel to position itself very quickly in the correction position. At the end of the measuring spin, the wheel stops automatically at the exact point of counterweight application. After correcting the first plane, by pressing "start", the wheel position itself accurately on the second correction point.



## Standard accessories



### SE KIT

Ring, quick locking sleeve SE2, SE spacer



### 3 CONES KIT

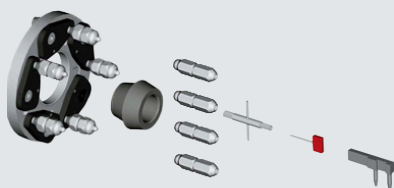
Ø 45÷110 mm, pincer-hammer and 60 g counterweight

## Optional accessories



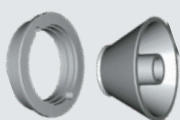
### RL CUP Ø 40

Large plastic cup with rubber ring for alloy rims protection



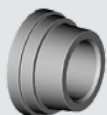
### UH20/2 Ø 40

Universal adapter for wheels with 3,4,5,6 holes. Complete with back centering double cone for wheels with/without central holes



### VL/2 CONE + G36 DISC

Kit for light truck wheels (Ø 97÷170 mm centre hole)



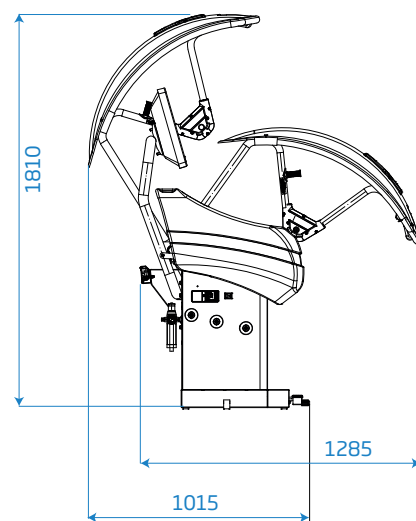
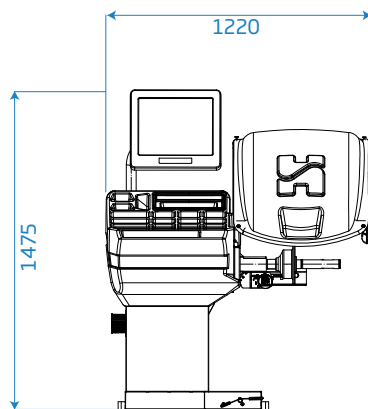
### MT2 CONE Ø 40

Stepped cone for Porsche - Audi - Opel - Volkswagen - BMW - Smart (Ø56,5 / 57 / 66,5 / 72,5 mm centre hole)



### PSA CENTERING KIT

Set of 3 bushes (Ø 58/60/65) + 2 cones (Ø 62÷68 mm and Ø 54÷60 mm). Developed on Peugeot and Citroën specs



## Technical Data

Single phase power supply

230V/1ph/50 hz

115V/1ph/60 Hz

Max. absorbed power

0.65 kW

Balancing speed

100 rpm

Measurement spin time for 15 kg (33 lb) wheel

4.7 s

Measurement uncertainty

± 0.5 g

Resolution

0.5 g

Average noise

< 70 dB (A)

Rim width setting range

1.5" ÷ 20" / 40 ÷ 510 mm

Rim diameter setting range

10" ÷ 30" / 265 ÷ 765 mm

Min./Max. compressed air pressure

7 ÷ 10 kg/cm<sup>2</sup> / ~ 0.7 ÷ 1 MPa  
~ 7 ÷ 10 bar / ~ 105 ÷ 145 psi

Max. wheel weight

< 75 kg

Machine weight

170 kg

## OPTIONAL WHEEL LIFTS

Professional wheel lifts with load capacity up to 80 kg. Reduced work times and exact centring of the wheel.



HOFMANN MEGAPLAN GmbH

Hüttenstrasse 7 - 67550 Worms - Germany

T +49 (0)6242 913 6666 - hm-mail@hofmann-megaplan.com

www.hofmann-megaplan.com